



C & B News Blog

Volume 9, Issue 9

September 2013

2013 RCP Audit

Greg Schabell

Safety & Compliance Manager

Last week, C & B completed our 3-year RCP Audit. The audit lasted 3 days and covered all aspects of our operating procedures and records. Our Policy & Procedure Manual is the “best” manual the auditor has seen. C & B’s overall performance was “excellent to outstanding.” A special thanks to the crews and captains on the Wayne C and Beverly Wayne: Ed Eichorn, Jason Hannon, Dan Yauch, Kevin Moore, Charlie Campbell, and Donnie Earles. Everyone did their part to make C & B look our best. The outstanding performance demonstrates our continual improvement to be the best and our readiness for the future. We’ll continue to make improvements and correct any issues uncovered during the audit. This audit was essential for our business and future. Thank you for everyone’s efforts!! Please continue all of your hard work and dedication to ensure C & B is the best the industry!

Inside This Issue

1. 2013 RCP Audit
2. Armed to the Teeth
3. M/V Discovery
4. Continual Improvement
5. TowWorks
6. The Blind Fish Factor
7. Open Containers
8. Vessel/Facility Files
9. Winter Approaching
10. Quote of the Month
11. Photo Gallery
11. Calendar Events
13. Announcements
14. Questions and Answers

Lazy Bench

Armed to the Teeth

Greg Schabell

Safety and Compliance Manager

...those gentlemen hanging out in Jamaica during the late 1600’s, early 1700’s known as pirates – Blackbeard, Calico Jack, Black Bart, Captain Henry Morgan (before they placed him next to the Bacardi behind the bar), – did not have the weapons we so joyfully display today. As these scourges of the sea plied their trade, constantly looking for ships to loot, the single shot black powder guns they used were (by today’s standards) primitive, allowing them to shoot only once prior to a lengthy reloading process. Because of this, these boy-scout dropouts needed to carry multiple weapons – a cutlass, at least one gun in each hand, one or five stuffed in their belts and perhaps one in each pocket. The truly dedicated ones (or perhaps they were crappy shots), wanting maximum arms capability, would hold a knife in their mouth. Now prepared for battle, our brethren of the waterways, from head to toe covered in weaponry, were now truly – *armed to the teeth.*





New Vessel Name

M/V Discovery

Chad Bray
COO

C & B is pleased to announce the name of our new vessel, the M/V Discovery! The Discovery will be 1320 HP. In addition to M/V Enterprise, this is the newest addition to our fleet. Please see the picture, and the most recent picture of the Enterprise, in the Photo Gallery.

Operations

Continual Improvement

Ed Lapikas
General Manager

September was a very busy month, and ended with the RCP audit. I am very proud to say we scored excellent overall. As general manager, I am well aware of the efforts put forth daily by our team to achieve these results. Without the dedication of each member of the team, we would not be where we are. There is an area that I would like us to focus on in the coming months and that is the organization of our paperwork by our crews. It is essential that we be extremely diligent and organized when filling out reports and log sheets, and everything needs to be filed properly. Anyone else needing to review your work should be able to find it easily and find that it is completely filled out according to standards. Again, I am very proud to be part of the C&B team and hope everyone has a great month.

Dispatch Department

TowWorks

Vicky Schottelkotte
Dispatch Manager

Silver Grove and Tanner's Creek will be starting to use TowWorks for reporting fleet activity. With Grain season getting close, it will be imperative that all fleet movements be reported in the TowWorks system. It is key to customer growth that all moves are in the TowWorks system for fleet movements. Please let me know if you are scheduled to work at one of the following fleets and need training: Silver Grove, Tanner's Creek or Hebron.

Sales Department

The Blind Fish Factor

Gordon Putzke
Sales Manager

4,340 people were killed in job-related accidents last year. In most cases, the death was caused by the "Blind Fish Factor". Workers who perform routine tasks day after day can become like fish in a pitch black cave that eventually lose their vision completely. As the fish adapt to their environment, their whiskers grow longer and become more sensitive to locate obstacles nearby and food necessary for survival. This is known as survival adaptability. Similarly, these workers learn that some aspects a job are rarely or never used. Instinctively they start to eliminate those parts of the job perceived as being inefficient. The energy expended on the job is unconsciously adjusted to the minimum level perceived necessary to get the job done. If they are not injured from taking these shortcuts, they start thinking, "*If nothing happened to me before- nothing will happen to me now.*" This may be true as long as the environment has not changed, but if something unexpected happens, the "Blind Fish Factor" will change from an efficient way to get the job done to a disaster. When the environment suddenly changes, you may not be able to adapt fast enough to keep yourself from being injured. You unconsciously transfer energy away from this seemingly useless task to a more expedient way to get the job done. This happens to all of us as we do our job. Those aspects of the job that seem inefficient to us are gradually eliminated. Sometimes, these are the very job procedures and safety rules that keep us from being injured. Stop now and take stock of how you do your job. Check yourself more frequently and develop the habit of doing it correctly the first time, every time. It is the constant repetition of proper actions that creates strong habits, and these habits ensure that the work is performed safely and correctly every time. Like the fish that spends too much time in the cave, your skills will be gone when you need them the most!



Does something seem different about the cave today?



Environmental

Open Containers

Bob Weis

Environmental Consultant

Any container (oil, paint, cleaner, thinner etc.) which has been opened during a shift is considered an "Open Container." At the end of a shift, this container must be closed or properly disposed of. If during the shift, you pour some of the product in the can into another container it becomes a "day or shift container." This is where the law applies and at the end of the shift the product left in the day container must:

1. Be returned to the original marked container and sealed or
2. You must close the day container and mark it with the following information
 - A. Name of product
 - B. The Date
 - C. Person who labeled the can

Drums: Once a drum is opened – if you do not use the entire product and close the drum – it becomes a "day container" and you must label it as above and add what quantity that remains. In cases where you empty the drum and it remains empty you must label the drum "MT" or "Empty." In a case where you reuse the drum with another product, you must label the drum with the following:

1. Contents (used engine oil, hydraulic oil, antifreeze or whatever is in the drum)
2. Origin of the content
3. Date
4. Approximate quantity of substance remaining
5. Your Name

Please follow these simple instructions and help keep your fellow workers safe and comply with regulations.

Safety Department

Vessel/Facility Files

Greg Schabell

Safety & Compliance Manager

In response to the recent RCP Audit and Coast Guard inspection, Rick Embry and I will be

inspecting the filing systems at all locations and vessels. We're asked to to complete countless forms and reports, and to keep record of everything under the sun, as members of the heavily regulated inland waters industry. One can gripe about the laborious task or find a solution to make it as painless as possible. Please take note of what has worked in the past and what has not. Our goal will be for our filing and record keeping to be uniform across our fleet, so that a pilot or deckineer can change boats or locations and know exactly where the pertinent records can be found. Please assist Rick and I, and help make filing and record keeping easy and uniform.

In addition, during vessel audits, it has been noticed that individuals are keeping the copy of the quiz or drill with them instead of the boat. Quizzes and drills must be kept in the boat's files. The USCG inspects those records for compliance. If you want to keep a copy for your personal records, an extra copy will need to be made.

Service Department

Winter Approaching

Jason Dew

Maintenance Coordinator

With the end of the year coming, winter will soon be here. With that comes colder starts and harsher conditions for our engines in all of our equipment. Please be aware of any little things you may see that could possibly be wrong on any of our equipment because if we can fix the little things now, we can save ourselves from bigger headaches down the road. Proactive not reactive. We will always be behind if we do not have the right mentality. We need to do much better this year and be proactive in everything. Think of all the questions and answers before a job.

Quote of the Month

"All rivers run into the sea; yet the sea is not full."

King Solomon

RCP Vessel Audit



Steve Kuhr at Hebron



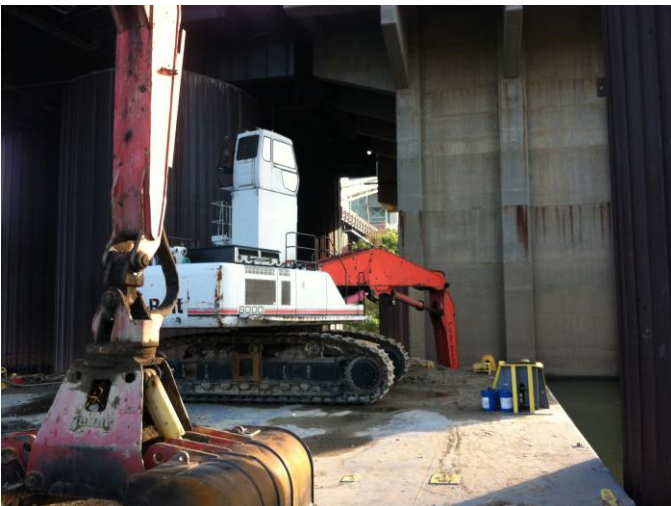
MV Enterprise Construction



MV Discovery Construction



Trimble County Dredging



WEBN Fireworks





CALENDAR OF EVENTS

BIRTHDAYS

1-Sep	Harris, Robert D.
1-Sep	Terrell, William M.
2-Sep	Crawford, Michael D
2-Sep	Moore, Gary W
2-Sep	Williams, Michael R
6-Sep	Gulley, Ian D
16-Sep	Loschiavo, Thomas L
16-Sep	Wallace, Ian E
17-Sep	Berning, Patrick J.
19-Sep	Collins, Adam L
19-Sep	Middleton, Ricky E
19-Sep	Stephenson, Spencer
23-Sep	Jump, Danny Ray
23-Sep	Thomas, Chad J
24-Sep	Jones, Donald G
24-Sep	Moore, Kevin E
27-Sep	Chase, Matthew
27-Sep	Laytart, Troy A
28-Sep	Armstrong, Thomas J

ANNIVERSARIES

6-Sep	2011	Campbell, Charles W
9-Sep	2008	Miller, Allen E
10-Sep	2009	Cutter, Norman Paul
10-Sep	2009	Hastings, Jason A
18-Sep	2006	Carnes, Jennifer L.
21-Sep	2006	Conley, James A.
21-Sep	2011	Popp, Anthony W
27-Sep	2000	Goodin, John T
29-Sep	2010	Fryar, Eldred A

Questions and Answers

We are asking that if you have any questions or would like clarification on something that you send us your questions and we will address them in this section. We look forward to hearing from everyone.

Q: How many boats do we operate and in what areas?

A: We currently operate 15 boats and our main area of focus is Ohio River miles 389-626. We sold the George Harrison earlier this year. We have 2 new boats under construction.

ANNOUNCEMENTS

Greg and Jessica welcomed a new 7 lb, 2 oz, 20" baby girl, Ella Grace Schabell, on September 5th at 12:52 pm!!



Q: How do I get in the Newsletter?

A: Individuals and operations will be recognized in each month's Newsletter for outstanding efforts in regards to safety, maintenance, operations, etc. The department managers will note the employee or operation they would like included in the Newsletter.

Q: Can I send pictures to be published in the Newsletter?

A: Yes! Send pictures to Greg Schabell or your manager.